

# Fairy Tale Composition – Impressionism

## ASSIGNMENT

Using the website - <http://www.angelfire.com/nb/classillus/images/perrault/perra.html> - you will be assigned to read one of Charles Perrault's fairytales and to create a 1-minute piece that reflects the story. You will be expected to compose your melody on piano and will use a MIDI keyboard to record your melody into GarageBand. The melody must be half the length of your entire composition. Consider how you might use tone color, tempo and dynamics, and major/minor to create a musical scene that accurately, and musically, depicts the feeling of the story. Be sure to use a minimum of two GarageBand loops to enhance your musical storytelling.

Sleeping Beauty  
Blue Beard  
The Fairies  
Cinderella or The Little Glass Slipper  
Ricky of the Tuft  
Little Tom Thumb

## QUESTIONS

- What kind of emotion is in the fairytale? Is it sad? Happy? Are there elements of both?
- Who are the main characters? What kind of tone color would these characters have?
- What is the pace of the story? Does it develop quickly? Slowly? How would you represent this through the elements of music?
- Are there moments of intensity? Is there a climax to the story? How would you represent this through the elements of music?

## GARAGEBAND

- To open GarageBand, go to the applications folder in finder and click on GarageBand. To access the program more easily, you may click and drag the application to your dock.
- Once open, choose New Project: Piano.
- Save the file to the desktop under your name(s) and period. Included in saving, please select a tempo in which you can easily play and record your piece (90) as well as the time signature.
- Once your composition is open, be sure to select "Metronome" and "Count in" under the CONTROL tab. These controls will help you record your composition successfully with a steady beat.

A few shortcuts:

- Apple N is another way to create a new song.
- Apple R – Record
- Space Bar – Start/Stop Song
- Apple D – Duplicate track (create new grand piano track). The track that is highlighted green is the track that will be recorded.
- Apple Z – Cursor back to the beginning
- Apple I – Information about the instrument (ability to switch the instrument)
- If you select the project window, you can adjust the tempo

Name(s): \_\_\_\_\_

Period (circle): 2 or 8

### 7<sup>th</sup> Grade Fairytale Composition Rubric

	<b>0 Points</b>	<b>2 point</b>	<b>4 points ☺</b>
<b>Form</b>	No form apparent	Form is slightly unclear	Form is correct (appropriate length) ☺
<b>Tempo Dynamics</b>	All requirements missing	One-Two requirements missing	Tempo and dynamics included ☺
<b>Creativity</b>	Much of the song is repetitious	Several measures seem to have repeated rhythms OR melodies	Composition shows creative thought and effort ☺
<b>Garageband Performance</b>	Three requirements missing	One-Two requirements missing	Accurate use of the MIDI keyboard with the addition of two loops ☺
<b>Interpretation</b>	Does not accurately tell the story AND impressionist style is unclear	The story is slightly accurate AND impressionist style is vague but present	Accurately tells the story with a clear understanding of the impressionist style ☺

Due: \_\_\_\_\_

Total: \_\_\_\_/20 (x2)

Final Composition Grade: \_\_\_\_/40

Name(s): \_\_\_\_\_

Period (circle): 2 or 8

### 7<sup>th</sup> Grade Fairytale Composition Rubric

	<b>0 Points</b>	<b>2 point</b>	<b>4 points ☺</b>
<b>Form</b>	No form apparent	Form is slightly unclear	Form is correct (appropriate length) ☺
<b>Tempo Dynamics</b>	All requirements missing	One-Two requirements missing	Tempo and dynamics included ☺
<b>Creativity</b>	Much of the song is repetitious	Several measures seem to have repeated rhythms OR melodies	Composition shows creative thought and effort ☺
<b>Garageband Performance</b>	Three requirements missing	One-Two requirements missing	Accurate use of the MIDI keyboard with the addition of two loops ☺
<b>Interpretation</b>	Does not accurately tell the story AND impressionist style is unclear	The story is slightly accurate AND impressionist style is vague but present	Accurately tells the story with a clear understanding of the impressionist style ☺

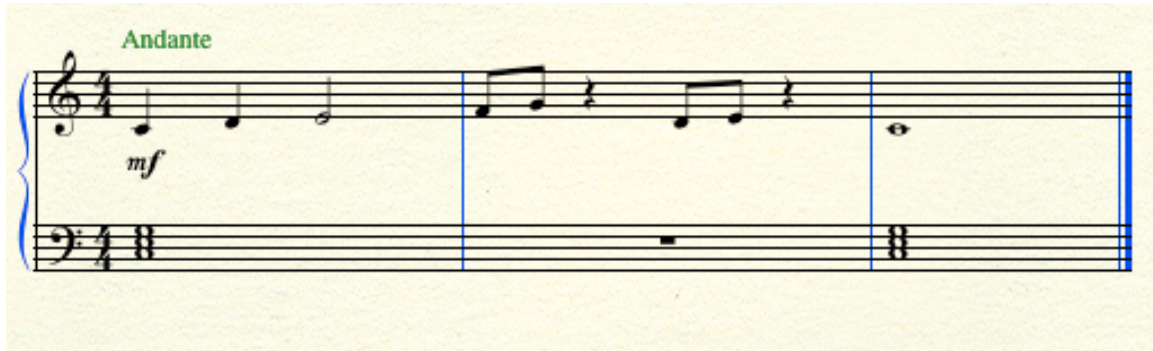
Due: \_\_\_\_\_

Total: \_\_\_\_/20 (x2)

Final Composition Grade: \_\_\_\_/40

# Musical Notation – Modern

You have been commissioned by the United States government to develop a new method of Music Notation. Use the following selection as a guide to start. Rewrite the following in your new notation.



Remember to include a new method for each of the following areas:

- Clef
- Time Signature
- Rhythm Value
- Pitch
- Tempo
- Dynamics

You do not want to be accused of **plagiarism** once your new method is created, so please ensure that your new method does not look like the old Italian method of notation. The government wants something American!

You will need to rewrite the selection, create a key for your notation (so others can understand your method) and present it to the government.

## The John Cage Effect

John Cage was an avant-garde, modern composer who created music that was both experimental and innovative.

Your assignment is to create a 30-second piece of music that reflects John Cage's style of composing. You are expected to write a one-paragraph biography of John Cage highlighting the aspects of his life that inspired your composition. You may use an instrument of your own choosing and will be expected to compose for this instrument using Finale Notepad 2008.

Name: \_\_\_\_\_

Period: \_\_\_\_\_

## 7<sup>th</sup> Grade Modern Composition Rubric

		<b>0 Points (no credit)</b>	<b>1 point</b>	<b>2 points</b>	<b>3 points (full credit) ☺</b>
<b>Musical Notation</b>	<b>Musical Concepts</b>	Missing five or more requirements	Missing three-four requirements	Missing one-two requirements	Fulfills all six requirements
	<b>Key</b>	No key is provided	Key is provided but is difficult to follow	Key is provided but could use improvements	Key is provided and is easy to understand
	<b>Presentation</b>				Accurately describes the musical notation
<b>The John Cage Effect</b>	<b>Length</b>	Does not fulfil the 30-second requirement	X	X	Fulfills the 30-second requirement
	<b>Creativity</b>	Much of the song is repetitious	Several measures seem to have repeated rhythms AND melodies	Several measures seem to have repeated rhythms OR melodies	Composition shows creative thought and effort ☺
	<b>Appearance</b>	Three or more requirements missing	Two requirements missing	One-two requirements missing	Include title, name(s) and document is neat ☺
	<b>John Cage</b>				

Due: \_\_\_\_\_

Total : \_\_\_\_/24 (x2)

Final Composition Grade: \_\_\_\_/48

•